


A man with short brown hair and a beard stands on a large, dark, textured rock formation. He is wearing a blue zip-up jacket with a yellow hood and a small white Husqvarna logo on the left chest, dark trousers, and white sneakers. His hands are in his pockets, and he is looking off to the side. The background shows a deep blue sea with whitecaps under bright sunlight. The rock he stands on has a long shadow cast across its surface.

WE ARE

CASUAL APPAREL
2019



Husqvarna[®]
MOTORCYCLES

A wide-angle photograph of a rugged coastal landscape. In the foreground, dark, jagged rock formations frame the bottom and right sides of the image. The middle ground is dominated by a calm, blue body of water, possibly a fjord or a large bay, which reflects the clear sky. Several large, flat-topped rock islands and peninsulas are scattered throughout the water. The background shows more distant, hazy landmasses under a pale blue sky. The overall mood is serene and majestic.

OUR INCREDIBLE
JOURNEY HAS TAKEN
US SO FAR THAT
PROGRESSION HAS
BECOME THE NORM.
WHEN LOOKING AT
WHERE WE'VE COME
FROM, WE SEE OUR
ROOTS ARE STILL AS
INSPIRING AS THE DAY
WE STARTED.



OVER THE LAST CENTURY SO MUCH HAS EVOLVED, YET NOT MUCH HAS CHANGED. STARING AT THE HORIZON, SURROUNDED BY THE CONVENIENCE OF MODERN COMFORT, WE STILL HAVE THE AGE-OLD DESIRE TO RIDE WHEREVER OUR MINDS TAKE US.

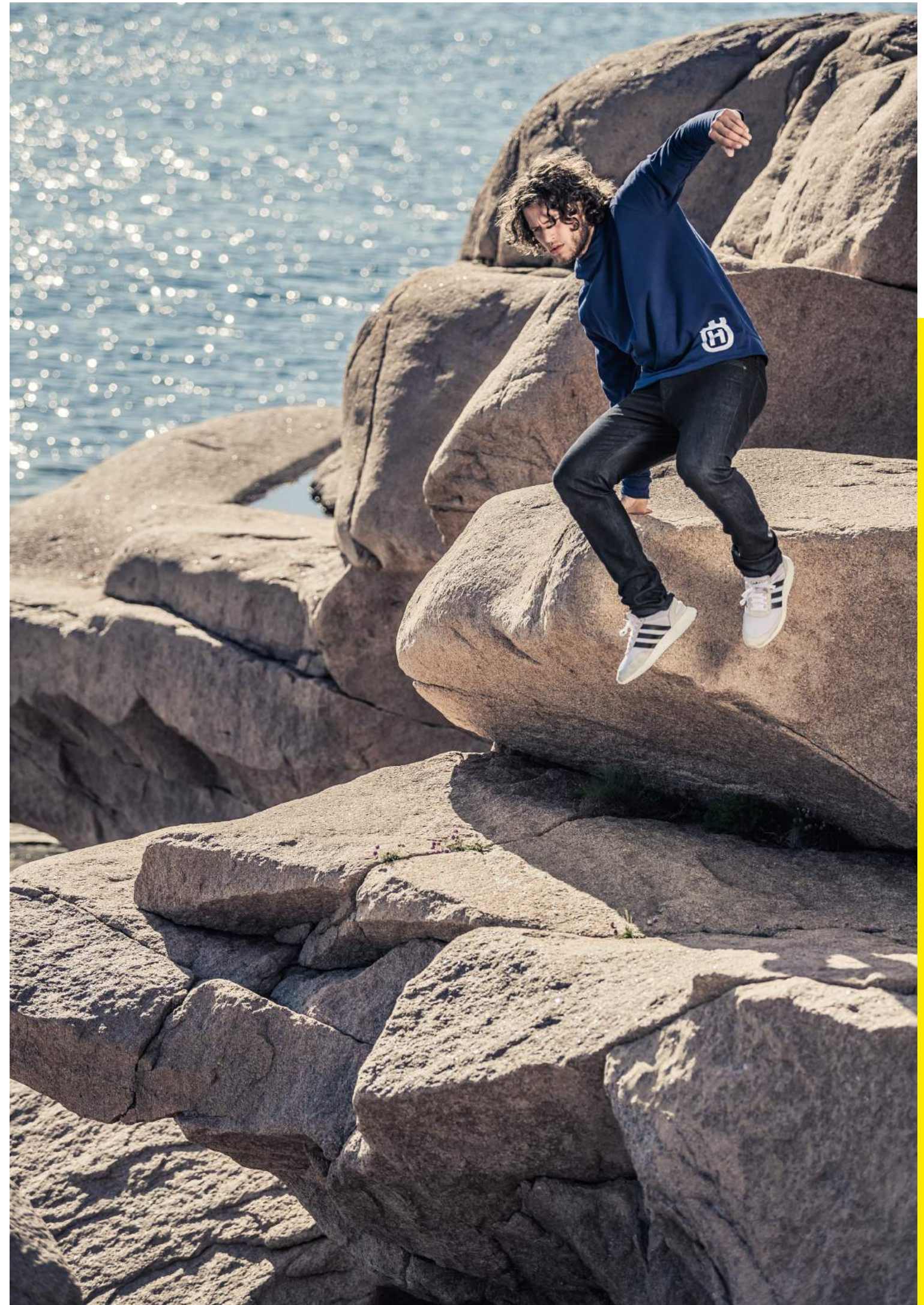


THIS IS WHERE WE BELONG.
LIFE TAKES US IN SO
MANY DIRECTIONS THAT
SOMETIMES YOU HAVE TO
RETURN TO A FAMILIAR
PLACE WHERE YOU CAN
REFOCUS YOUR INTENTIONS.
REDISCOVERING THE ORIGINS
OF YOUR PASSION IS
THE ULTIMATE MOTIVATION.

MEN	12
WOMEN	42
KIDS	50
LIFESTYLE ACCESSORIES	54

EVER-EVOLVING, YET UNCHANGED

Through constant innovation and progression, Husqvarna Motorcycles has created a heritage filled with significant milestones. These achievements have shaped who we are today, but have also taught us that a pioneer's work is never quite done. We are not afraid to evolve and this perpetual advancement is as much a part of who we are as the foundations it stems from. Knowing where we've come from gives us the confidence to pioneer stylish new ways for the brand to form part of our everyday lives.





MEN



INVENTOR HOODIE

As things cool down after an epic day’s riding, a warmer outer layer is an essential item to have. For these moments, Husqvarna Motorcycles offers the INVENTOR HOODIE. It includes several innovative features, making this product about so much more than just warmth. Its specially designed hood, hidden side pockets and a typically clean Swedish style makes it an appealing garment.

- Made in Europe
- Hidden side pockets
- High-quality workmanship

MATERIAL
65% cotton / 35% polyester

WHITE			
S	3HS1964102	M	3HS1964103
L	3HS1964104	XL	3HS1964105
XXL	3HS1964106		

BLUE			
S	3HS1966502	M	3HS1966503
L	3HS1966504	XL	3HS1966505
XXL	3HS1966506		

INVENTOR TEE

- Made in Europe
- Special seam line
- High-quality workmanship

MATERIAL
100% cotton

WHITE			
S	3HS1966102	M	3HS1966103
L	3HS1966104	XL	3HS1966105
XXL	3HS1966106		

BLUE			
S	3HS1966202	M	3HS1966203
L	3HS1966204	XL	3HS1966205
XXL	3HS1966206		





INVENTOR HAT SNAPBACK

MATERIAL
100% cotton

OSFA UHS1970500



INVENTOR BEANIE BLUE

MATERIAL
100% acrylic

OSFA 3HS1970600





SIXTORP LIGHT JACKET

Outdoor sports expose us to all the elements, and preparation is the key to facing its renowned unpredictability. The SIXTORP LIGHT JACKET is a uniquely designed outer layer that ensures you are ready for any surprise changes in the weather. Keeping you warm in the areas you need it most, yet light enough to perform trackside duties with comfort and ease. A stylish, functional jacket that provides the best outcome whatever nature has in store for us.

- High-grade functional material
- Sporty style

MATERIAL
Top layer: 94% polyester / 6% elastane
Top layer hood: 100% nylon

S	3HS1964202	M	3HS1964203
L	3HS1964204	XL	3HS1964205
XXL	3HS1964206		



SIXTORP HYBRID JACKET

- Water-repellent
- Wind-resistant
- Waterproof zippers
- Drawstring in hood
- Several storage compartments

MATERIAL
Top layer: 90% polyester / 10% elastane
Top layer insert: 100% polyester

S	3HS1965102	M	3HS1965103
L	3HS1965104	XL	3HS1965105
XXL	3HS1965106		

SIXTORP TEE

- Breathable
- Fast-drying
- Optimum moisture wicking away from the skin
- Special seam line for high wear comfort

MATERIAL
100% polyester

S	3HS1966602	M	3HS1966603
L	3HS1966604	XL	3HS1966605
XXL	3HS1966606		



CORPORATE BEANIE

MATERIAL
100% acrylic

OSFA	3HS1970700
------	------------



BASIC LOGO ZIP JACKET

- Classic sweat jacket with a clean, sporty look
- Chest pocket with yellow edging and zip
- Husqvarna web label on hem, stand-up collar with Husqvarna emblem on the neck
- White piping along the zip
- Flatlock seams
- Pockets with side opening

MATERIAL
92% polyester / 8% elastane

S	3HS1755102	M	3HS1755103
L	3HS1755104	XL	3HS1755105
XXL	3HS1755106		



BASIC LOGO TEE BLUE

- Classic logo T-shirt in high quality, single jersey fabric
- Embossed Husqvarna emblem on hem

MATERIAL
100% cotton

S	UHS1556202	M	UHS1556203
L	UHS1556204	XL	UHS1556205
XXL	UHS1556206	XXXL	UHS1556207





CLASSIC POLO

- Made in Europe
- Polo shirt made of elastic single jersey fabric
- Husqvarna lettering on the chest and printed logo on the neck
- Cool mesh piping around armholes, button tab in contrasting color with underneath button tab in yellow mesh

MATERIAL
95% cotton / 5% elastane

S	UHS1756102	M	UHS1756103
L	UHS1756104	XL	UHS1756105
XXL	UHS1756106	XXXL	UHS1756107



CORPORATE SHADES

- Impact-resistant glasses
- 100% UVA, UVB and UVC protection
- Exclusively for Husqvarna Motorcycles by 100%

MATERIAL
100% plastic

3HS1970400

TEAM ZIP HOODIE

- Sporty and elaborately finished sweat jacket
- Stitched logo appliqué on both sleeves
- Husqvarna logo on the chest and shoulder blade
- Kangaroo pocket, cuffs and waistband in a contrasting color

MATERIAL

70 % cotton / 30 % polyester

S	3HS1655202	M	3HS1655203
L	3HS1655204	XL	3HS1655205
XXL	3HS1655206	XXXL	3HS1655207





TEAM FLEECE

- Functional and warm polar fleece with stitched logo on the front and back
- Contrasting yellow details on the zip and sides

MATERIAL
100 % polyester

S	3HS1655102	M	3HS1655103
L	3HS1655104	XL	3HS1655105
XXL	3HS1655106	XXXL	3HS1655107



TEAM POLO

- Polo shirt made of high-quality single jersey fabric
- Side inserts in a contrasting color
- Husqvarna logos printed on the chest, back and sleeve

MATERIAL
100 % cotton

S	UHS1656202	M	UHS1656203
L	UHS1656204	XL	UHS1656205
XXL	UHS1656206	XXXL	UHS1656207

TEAM SHIRT

- Elaborately finished shirt
- Side inserts in a contrasting color
- Husqvarna stitched logo on the chest, printed logo on the sleeve and back

MATERIAL
65% polyester / 35% cotton

S	UHS1656302	M	UHS1656303
L	UHS1656304	XL	UHS1656305
XXL	UHS1656306	XXXL	UHS1656307



TEAM TEE

- T-shirt made of high-quality single jersey fabric
- Side inserts in a contrasting color
- Husqvarna logos printed on the chest, back and sleeve

MATERIAL
100% cotton

S	UHS1656102	M	UHS1656103
L	UHS1656104	XL	UHS1656105
XXL	UHS1656106	XXXL	UHS1656107





TEAM PANTS

- Pants with large, practical cargo pockets
- Contrasting yellow details on the pockets and waistband
- Stitched logo on the side and back pocket

MATERIAL
65% polyester / 35% cotton

S / 30	3HS1652102	M / 32	3HS1652103
L / 34	3HS1652104	XL / 36	3HS1652105
XXL / 38	3HS1652106		



TEAM SHORTS

- Sporty shorts with large, practical cargo pockets
- Contrasting yellow details on the pockets and waistband
- Husqvarna stitched logo on the side pocket and stitched logo on the back pocket

MATERIAL
65% polyester / 35% cotton

S / 30	3HS1652202	M / 32	3HS1652203
L / 34	3HS1652204	XL / 36	3HS1652205
XXL / 38	3HS1652206		

TEAM HAT

MATERIAL
97% polyester / 3% elastane

OSFA UHS1758100

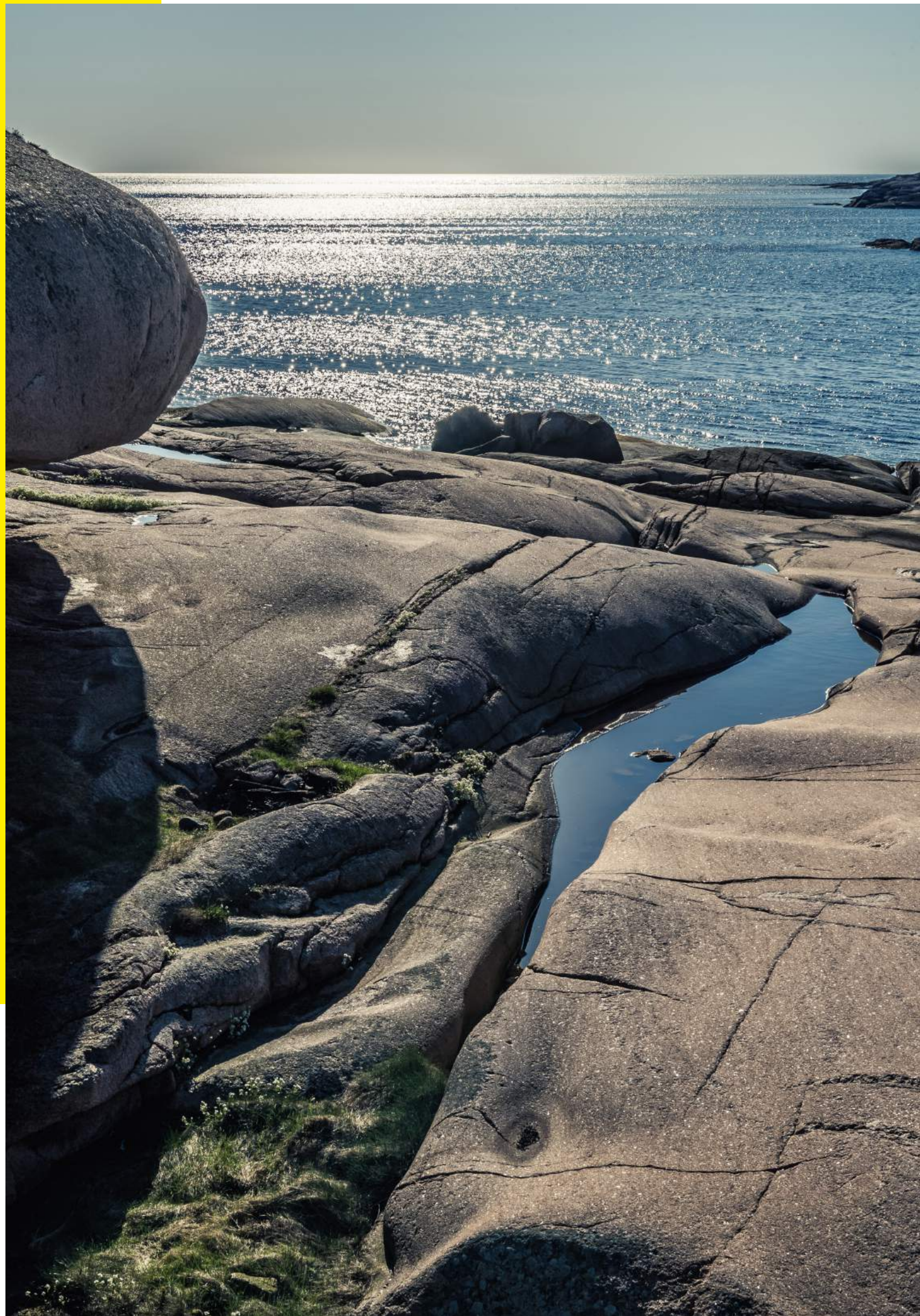


TEAM STYLE HAT

MATERIAL
98% polyester / 2% elastane

OSFA UHS1758200







WOMEN



WOMEN INVENTOR LONG SLEEVE

The INVENTOR LONG SLEEVE for women is a high-quality cotton top specially designed for a comfortable fit. Elements of yellow stand out from the Husqvarna blue in a statement of true Swedish style. A Husqvarna Motorcycles emblem leads the way on the plain white front, while the adapted raglan style sleeves give you the freedom to move easily within its appealing slim fit.

- Made in Europe
- Special seam line
- High-quality workmanship

MATERIAL
92 % cotton / 8 % elastane

XS	3HS1986201	S	3HS1986202
M	3HS1986203	L	3HS1986204
XL	3HS1986205		

WOMEN INVENTOR TEE

- Made in Europe
- Special seam line
- High-quality workmanship

MATERIAL
50% cotton / 50% modal

XS	3HS1986101	S	3HS1986102
M	3HS1986103	L	3HS1986104
XL	3HS1986105		



GIRLS BASIC LOGO ZIP JACKET

- Classic sweat jacket with a clean, sporty look
- Chest pocket with yellow edging and zip
- Husqvarna web label at hem, stand-up collar with Husqvarna emblem on neck
- White piping along the zip
- Flatlock seams
- Pockets with side opening
- Elastic, soft trim on sleeve and hem

MATERIAL
92% polyester / 8% elastane

XS	3HS1784201	S	3HS1784202
M	3HS1784203	L	3HS1784204
XL	3HS1784205		





GIRLS BASIC LOGO POLO

- Made in Europe
- Polo shirt made of elastic single jersey fabric
- Husqvarna lettering on the chest and logo on the neck
- Cool mesh piping around armholes, button tab in contrasting color with underneath button tab in yellow mesh

MATERIAL
95 % cotton / 5 % elastane

XS	3HS1786101	S	3HS1786102
M	3HS1786103	L	3HS1786104
XL	3HS1786105		

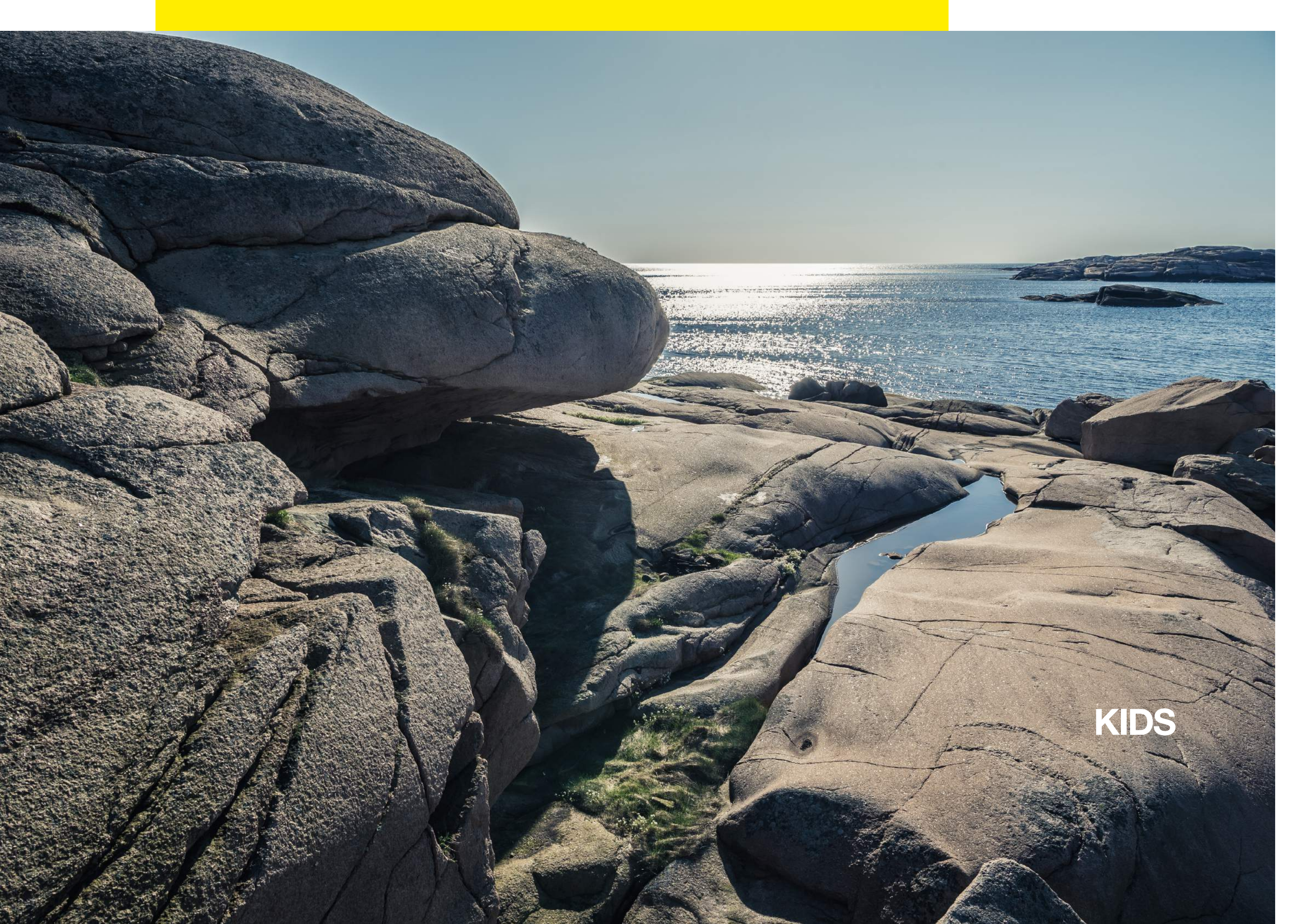


GIRLS TEAM SHIRT

- Elaborately finished shirt
- Side inserts in a contrasting color
- Husqvarna stitched logo on the chest, printed logo on the sleeve and back

MATERIAL
65 % polyester / 35 % cotton

XS	3HS1686301	S	3HS1686302
M	3HS1686303	L	3HS1686304
XL	3HS1686305		



KIDS

KIDS TEAM TEE

- T-shirt made of high-quality single jersey fabric
- Side inserts in a contrasting color
- Husqvarna logos printed on the chest, back and sleeve

MATERIAL
100% cotton

XXS	3HS1696204	XS	3HS1696205
S	3HS1696206	M	3HS1696207
L	3HS1696208		



KIDS TEAM HAT

MATERIAL
98% polyester / 2% elastane

OSFA UHS1798100





**LIFESTYLE
ACCESSORIES**



CORPORATE UMBRELLA

– Diameter approx. 130 cm

MATERIAL
100 % nylon

3HS1971000



CORPORATE PADDOCK CHAIR

– Size: 60 x 95 x 110 cm

MATERIAL
80 % polyester / 20 % metal

3HS1971200



DAKAR BACKPACK

- Size approx. 44.5 x 25.5 x 20 cm
- Weight approx. 0.9 kg
- Volume approx. 11.96 liters
- Exclusively for Husqvarna Motorcycles by OGIO

MATERIAL
100% polyester

3HS1970100





ERZBERG HYDRATION PACK

- Size approx. 28 x 24 x 2.5 cm
- Weight approx. 0.4 kg
- Volume approx. 3 liters
- Exclusively for Husqvarna Motorcycles by OGIO

MATERIAL
100 % polyester

3HS1970200



COMP BELT BAG

- Deluxe front flip down tool organizer pouch
- Right side necessity pocket with water resistant zipper
- Expandable beverage stow-away holster with cinch strap
- Spare moto tube compartment
- Exterior D-rings for T-handles
- Hip foam padding for ultimate comfort
- Adjustable padded waist belt
- Size approx. 70 x 16 x 20 cm
- Exclusively for Husqvarna Motorcycles by OGIO

MATERIAL
100 % polyester

3HS1970300

TRAVEL BAG 9800

- SLED (Structural Load Equalizing Deck) System for increased durability and handling
- Large main compartment with adjustable dividers and padded helmet chamber
- iFOM (integrated foam) construction throughout for added gear protection
- Heavy duty oversized wheels with extra clearance
- Secure hold compression strap system
- Telescoping pull handle
- Size approx. 86 x 42 x 39 cm
- Weight approx. 6.5 kg
- Volume approx. 122 liters
- Exclusively for Husqvarna Motorcycles by OGIO

MATERIAL
100 % polyester

3HS1970000



FC 450 MODEL BIKE

- Motorcycle model, scale 1:12

MATERIAL
100 % plastic

3HS1971500





FE 350 MODEL BIKE

– Motorcycle model, scale 1:12

MATERIAL
100% plastic

3HS1971100



HUSQVARNA CROSS 400/70 MODEL BIKE

– Motorcycle model, scale 1:12

MATERIAL
100% plastic

3HS1771000

LEGAL DISCLAIMER

Husqvarna Motorcycles GmbH reserves the right – without prior notice and without specifying reasons – to amend the technical specifications, fittings, scope of supply, colors, materials, services offered and provided, etc., or to discontinue them without replacement, or to stop manufacturing a particular article. Before ordering or purchasing any of the products or models offered, please obtain information regarding the respective scope of equipment and supply from your Husqvarna Motorcycles authorized dealer. All details are non-binding and specified with the proviso that errors, for instance in printing, setting and/or typing, may occur; such information is subject to change without notice at any time.

WARNING

Do not imitate the riding scenes shown! The riders illustrated are professional motorcycle riders. The photos were taken on closed racing circuits or closed roads. Husqvarna Motorcycles wishes to make all motorcyclists aware that they need to wear the prescribed protective gear and always ride in a responsible manner in accordance with the relevant and applicable provisions of the road traffic regulations.



Husqvarna Motorcycles North America, Inc.
USA, 30100 Technology Drive, Murrieta, CA 92563
CANADA, 8701 Rue Samuel-Hatt, Chambly, QC J3L-6V4
www.husqvarna-motorcycles.com



© 2018 Husqvarna Motorcycles North America, Inc.